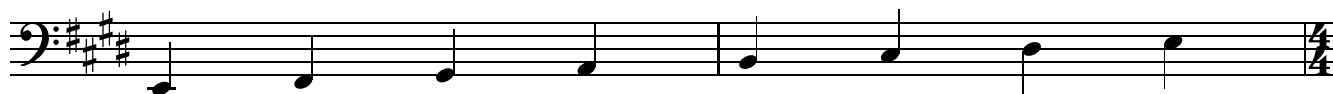


# E SIGHT-READING + RHYTHM EXERCISES

## Level 1

Bass Clef Instruments - Lower Octave - "E" Scale




On this sheet, we will introduce 16th note/8th note combinations.


This means that within 1 beat, there may be both 8th notes and 16th notes.

Remember that 8th notes are counted 1+2+3+4+.

Remember that 16th notes are counted 1-e+-a-2-e+-a-3-e+-a-4-e+-a.

There are 2 ways this can happen.

If there is an 8th followed by two 16ths () it will be labeled 1-+-a.

If the two 16ths come first followed by an 8th () it will be labeled 1-e-+.

3 **A**



7 **B**



11 **C**



15 **D**



19 **E**



23 **F**

